

**Josephine Avenue, Brixton, SW2**

2 bedroom flat to let

**£600 Per Week**

Furnished

## Property Details

Beautiful, bright and open two bedroom flat, complete with the sunny escape of a private roof terrace. This is a gorgeous two double bedroom flat located in a popular yet secluded residential street near Brixton. The flat has a good size open plan reception kitchen, with hardwood floors and a feature open fireplace. The kitchen has a good amount of storage and modern appliances. The reception area is large, having enough space for a dedicated dining space. There are two spacious double bedrooms, one having the added benefit of a built-in double wardrobe and access to the private patio balcony which is perfect for the summer months. Both bedrooms share a bright modern family size bathroom. Brixton is less than 10 minutes away, with a plethora of culinary delights, and entertainment such as the Ritzy, Electric Avenue, the Brixton Academy and much more as well as multiple transport links into the city. Brockwell Park is also a five-minute stroll away.

## Features

- Roof terrace
- Central location
- Close to Brockwell Park
- 2 Double bedrooms
- Light and airy
- Characterful Features
- Furnished

Council tax band C      EPC rating C (69)





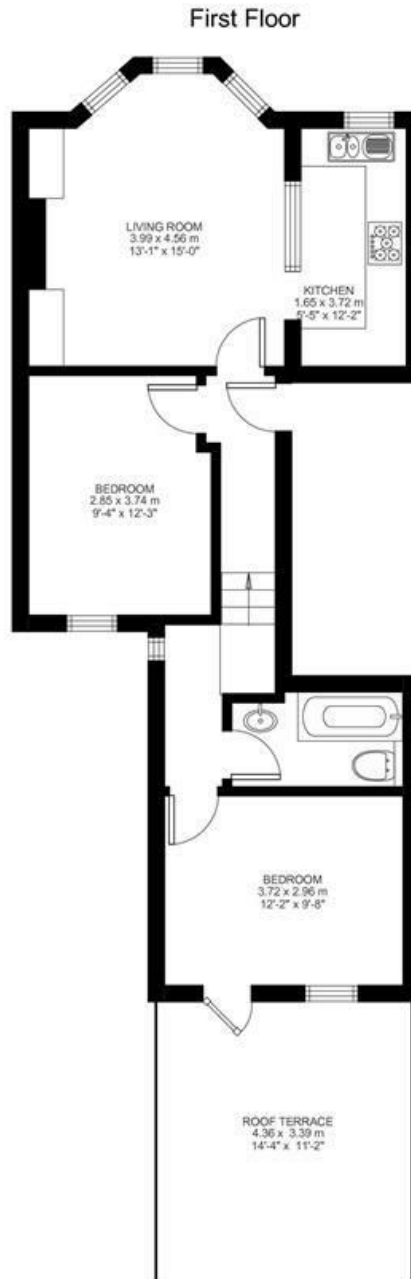
## Josephine Avenue

### 2 Bed Flat

Approx internal area:

**626 sqft 58 sqm**

While we do try our very best, floor plans are produced as a guide only and we take no responsibility for the precise accuracy with which any property is represented



Josephine Avenue, Brixton, SW2

